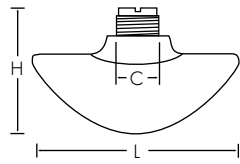


# +GF+ SIGNET Installation Fittings

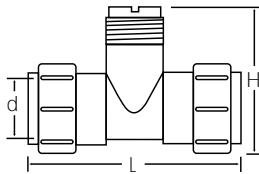
## Fiberglass Glue-on Saddles



Part no.	Code	Size	L	H	o.d.	C
FPS030	159 000 441	3.00 in.	5.9	4.5	3.50	1.44
FPS040	159 000 442	4.00 in.	8.0	4.5	4.50	1.44
FPS060	159 000 443	6.00 in.	8.0	6.5	6.62	2.25
FPS080	198 801 417	8.00 in.	10.0	8.0	8.62	2.25
FPS100	159 000 444	10.0 in.	12.0	8.5	10.75	2.25
FPS120	159 000 445	12.0 in.	12.0	8.5	12.75	2.25

- C - Clearance dimension
- Up to 8 in. - PVDF insert, over 8 in. - PVC
- Mounts on fiberglass pipe

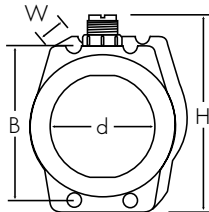
## Metric PP Union Tee Fittings



Part no.	Code	DN	L	H	d
PPMT005	198 150 522	15 mm	128	97	20
PPMT007	198 150 523	20 mm	142	105	25
PPMT010	198 150 524	25 mm	156	110	32
PPMT012	198 150 525	32 mm	160	120	40
PPMT015	198 150 526	40 mm	176	130	50
PPMT020	198 150 527	50 mm	194	146	63

- Socket fusion equipment is required to install PVDF and PP union tees.

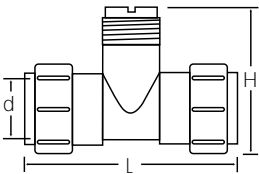
## Metric PP Wafer Fittings



Part no.	Code	DN	W	H	d	B
PPMT025	198 150 560	65 mm	46	175	75	142
PPMT030	198 150 696	80 mm	49	194	90	160
PPMT040	198 150 562	100 mm	56	220	110	186
PPMT050	198 150 563	125 mm	64	265	140	215
PPMT060	198 150 564	150 mm	70	297	160	240
PPMT080	198 150 565	200 mm	71	352	225	297

- Not compatible with integral mount transmitters due to limited clearance between flange rings

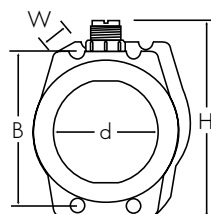
## Metric PVDF Union Tee Fittings



Part no.	Code	DN	L	H	d
SFMT005	198 150 529	15 mm	128	97	20
SFMT007	198 150 530	20 mm	142	105	25
SFMT010	198 150 531	25 mm	156	110	32
SFMT012	198 150 532	32 mm	160	120	40
SFMT015	198 150 533	40 mm	176	130	50
SFMT020	198 150 534	50 mm	194	146	63

- Socket fusion equipment is required to install PVDF and PP union tees.

## Metric PVDF Wafer Fittings

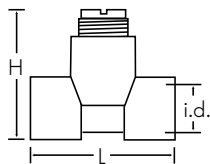


Part no.	Code	DN	W	H	d	B
SFMT025	198 150 571	65 mm	46	175	75	142
SFMT030	198 150 697	80 mm	49	194	90	160
SFMT040	198 150 573	100 mm	56	220	110	186
SFMT050	198 150 574	125 mm	64	265	140	215
SFMT060	198 150 575	150 mm	70	297	160	240
SFMT080	198 150 576	200 mm	71	352	225	297

- Not compatible with integral mount transmitters due to limited clearance between flange rings

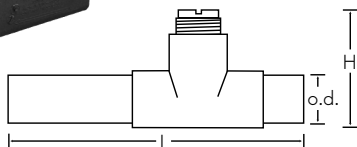
# +GF+ SIGNET Installation Fittings

## PVC TEES SCH 80 - Fitting only



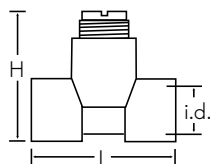
Part no.	Code	Size	L	H	i.d.
PV8T005F	159 000 527	0.50 in.	3.75	3.6	0.85
PV8T007F	159 000 529	0.75 in.	3.75	3.8	1.06
PV8T010F	159 000 531	1.00 in.	4.26	4.0	1.33
PV8T012F	159 000 533	1.25 in.	4.36	4.4	1.67
PV8T015F	159 000 535	1.50 in.	4.90	4.6	1.91

## PVC TEES SCH 80 - With Pipe\*



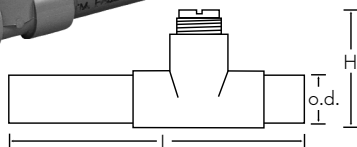
Part no.	Code	Size	L	H	o.d.
PV8T005	159 000 526	0.50 in.	14	3.6	0.84
PV8T007	159 000 528	0.75 in.	14	3.8	1.05
PV8T010	159 000 530	1.00 in.	17	4.0	1.32
PV8T012	159 000 532	1.25 in.	20	4.4	1.66
PV8T015	159 000 534	1.50 in.	24	4.6	1.90
PV8T020	198 801 415	2.00 in.	24	5.0	2.38
PV8T025	198 801 573	2.50 in.	24	5.4	2.88
PV8T030	198 801 416	3.00 in.	24	6.0	3.50
PV8T040	198 801 436	4.00 in.	24	7.0	4.50

## CPVC Tees SCH 80 - Fitting only



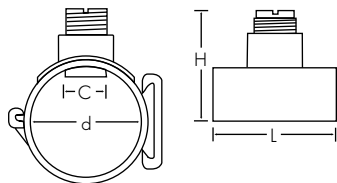
Part no.	Code	Size	L	H	i.d.
CPV8T005F	159 000 409	0.50 in.	3.75	3.6	.85
CPV8T007F	159 000 411	0.75 in.	3.75	3.8	1.06
CPV8T010F	159 000 413	1.00 in.	4.26	4.0	1.33
CPV8T012F	159 000 415	1.25 in.	4.36	4.4	1.67
CPV8T015F	159 000 417	1.50 in.	4.90	4.6	1.91

## CPVC Tees SCH 80 - With Pipe\*



Part no.	Code	Size	L	H	o.d.
CPV8T005	159 000 408	0.50 in.	14	3.6	0.84
CPV8T007	159 000 410	0.75 in.	14	3.8	1.05
CPV8T010	159 000 412	1.00 in.	17	4.0	1.32
CPV8T012	159 000 414	1.25 in.	20	4.4	1.66
CPV8T015	159 000 416	1.50 in.	24	4.6	1.90

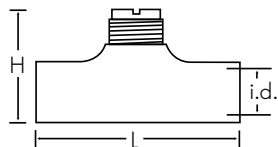
## PVC Clamp-on Saddles



Part no.	Code	Size	L	H	d	C
PV8S020	159 000 637	2.00 in.	4.00	5.0	2.375	1.43
PV8S025	159 000 638	2.50 in.	4.75	5.4	2.875	1.43
PV8S030	198 150 577	3.00 in.	5.00	6.0	3.500	1.43
PV8S040	198 150 578	4.00 in.	5.00	7.0	4.500	1.43
PV8S060	198 150 579	6.00 in.	5.00	10.0	6.625	2.25
PV8S080	159 000 639	8.00 in.	5.00	11.5	8.625	2.25

- Mounts on PVC pipe
- C - Clearance dimension

## Fiberglass Glue-on Tees



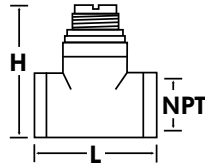
Part no.	Code	Size	L	H	i.d.
FPT015	159 000 446	1.50 in.	5.5	4.7	1.92
FPT020	159 000 447	2.00 in.	7.7	8.0	2.38

- PVDF insert - all sizes

\*Pipe lengths included with these fittings do not satisfy straight-run requirements for all installation configurations.

# +GF+ SIGNET Installation Fittings

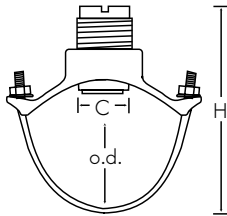
## Galvanized Iron/Brass Threaded Tee with NPT Threads



Part no.	Code	Size	NPT	L	H
IR4T010	198 001 421	1.00 in.	1.0	3.4	4.1
IR4T012	198 801 422	1.25 in.	1.25	3.56	4.34
IR4T015	198 801 423	1.50 in.	1.50	3.75	4.67
IR4T020	198 801 424	2.00 in.	2.0	3.90	5.05
BR4T010	198 801 770	1.00 in.	1.0	3.36	2.40
BR4T012	198 801 771	1.25 in.	1.25	3.42	2.67
BR4T015	198 801 772	1.50 in.	1.50	3.46	2.97
BR4T020	198 801 773	2.00 in.	2.0	3.68	3.53

- PVDF insert - all sizes
- For use with SCH 40 metal pipe

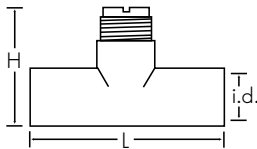
## Iron Strap-on Saddle



Part no.	Code	Size	H	o.d. min	o.d. max	C
IR8S020	198 801 425	2.00 in.	5.5	2.35	2.56	1.44
IR8S025	198 901 426	2.50 in.	5.5	2.44	2.91	1.44
IR8S030	198 801 427	3.00 in.	6.5	2.97	3.54	1.44
IR8S040	198 801 420	4.00 in.	7.5	3.74	4.55	1.44
IR8S050	198 801 429	5.00 in.	9.0	4.74	5.63	2.25
IR8S060	198 801 430	6.00 in.	10.5	5.94	6.70	2.25
IR8S080	198 801 431	8.00 in.	12.0	7.69	8.72	2.25
IR8S100	198 801 432	10.0 in.	18.0	10.64	12.12	2.25
IR8S120	198 810 433	12.0 in.	20.0	12.62	14.32	2.25

- C - Clearance dimension
- Up to 8 in.- PVDF insert, over 8 in. - PVC insert

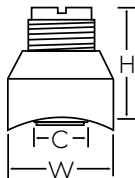
## Copper/Bronze Sweat-on Tee



Part no.	Code	Size	L	H	i.d.
CUKT005	198 801 687	0.50 in.	3.15	3.57	0.62
CUKT007	198 801 688	0.75 in.	2.96	3.52	0.87
CUKT010	198 801 689	1.00 in.	3.23	3.80	1.12
CUKT012	198 801 690	1.25 in.	4.16	4.12	1.38
CUKT015	198 801 691	1.50 in.	4.43	4.34	1.63
CUKT020	198 801 418	2.00 in.	5.31	4.86	2.11

- No insert up to 1 in., over 1 in. - PVDF insert
- For use with copper pipe

## Copper/Bronze Braze-on Brazolet

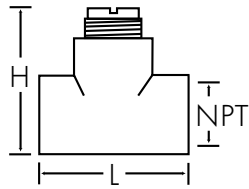


Part no.	Code	Size	W	H	C
BR4B025	198 801 794	2.5 in.	2.50	2.96	1.438
BR4B030	198 801 795	3.0 in.	2.55	2.90	1.438
BR4B040	198 801 796	4.0 in.	2.50	2.75	1.438
BR4B050	198 801 797	5.0 in.	3.50	3.98	2.25
BR4B060	198 801 798	6.0 in.	3.50	4.00	2.25
BR4B080	198 801 799	8.0 in.	3.50	4.00	2.25
BR4B100	198 801 800	10.0 in.	3.50	4.00	2.25
BR4B120	198 801 801	12.0 in.	3.50	7.00	2.25

- C - Clearance dimension
- Up to 8 in. - PVDF insert, over 8 in. - PVC insert
- For use with copper pipe

# +GF+ SIGNET Installation Fittings

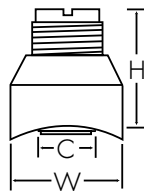
## Carbon Steel Threaded Tees with NPT Threads



Part no.	Code	Size (NPT)	L	H
CS4T005	198 801 459	0.50 in.	3.6	4.0
CS4T007	198 801 460	0.75 in.	3.6	4.2
CS4T010	198 801 461	1.00 in.	3.6	4.2
CS4T012	198 801 462	1.25 in.	3.8	4.5
CS4T015	198 801 419	1.50 in.	4.1	4.8
CS4T020	198 801 463	2.00 in.	4.9	5.3

- PVDF insert - all sizes
- For use with SCH 40 metal pipe

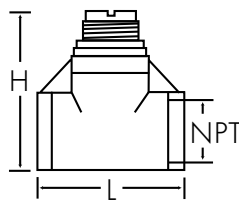
## Carbon Steel Weld-on Weldolets



Part no.	Code	Size	H	W	C
CS4W025	198 801 464	2.50 in.	2.96	2.50	1.44
CS4W030	198 801 557	3.00 in.	2.90	2.55	1.44
CS4W040	198 801 552	4.00 in.	2.75	2.50	1.44
CS4W050	198 801 465	5.00 in.	3.98	3.50	2.25
CS4W060	198 801 553	6.00 in.	4.00	3.50	2.25
CS4W080	198 801 574	8.00 in.	4.00	3.50	2.25
CS4W100	198 801 575	10.0 in.	4.00	3.50	2.25
CS4W120	198 801 576	12.0 in.	7.00	3.50	2.25

- Up to 8 in.- PVDF insert, over 8 in. - PVC insert
- For use with SCH 40 metal pipe (Special order over 12 in.)
- C - Clearance dimension

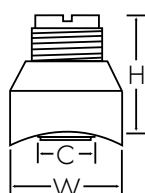
## 316 SS Threaded Tees with NPT Threads



Part no.	Code	Size (NPT)	L	H
CR4T005	198 801 554	0.50 in.	3.6	4.0
CR4T007	198 801 555	0.75 in.	3.6	4.2
CR4T010	198 801 556	1.00 in.	3.6	4.2
CR4T012	198 801 783	1.25 in.	3.8	4.5
CR4T015	198 801 784	1.50 in.	4.1	4.8
CR4T020	198 801 785	2.00 in.	4.9	5.3

- PVDF insert - all sizes
- For use with SCH 40 metal pipe

## 316 SS Weld-on Weldolets

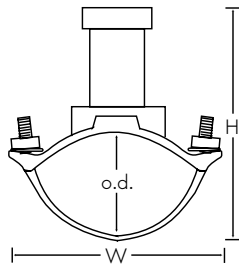


Part no.	Code	Size	H	W	C
CR4W025	198 801 786	2.50 in.	2.96	2.50	1.44
CR4W030	198 801 787	3.00 in.	2.90	2.55	1.44
CR4W040	198 801 788	4.00 in.	2.50	2.75	1.44
CR4W050	198 801 789	5.00 in.	3.98	3.50	2.25
CR4W060	198 801 790	6.00 in.	4.00	3.50	2.25
CR4W080	198 801 791	8.00 in.	4.00	3.50	2.25
CR4W100	198 901 792	10.0 in.	4.00	3.50	2.25
CR4W120	198 801 793	12.0 in.	7.00	3.50	2.25

- Up to 8 in. - PVDF insert, over 8 in. - PVC insert
- For use with SCH 40 metal pipe
- C - Clearance dimension

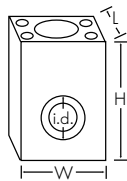
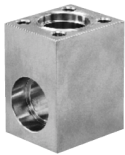
# +GF+ SIGNET Installation Fittings

## Metalex Strap-On Saddle



Part no.	Code	Size	H	W	o.d. min	o.d. max
P526-1020	159 000 484	2.00 in.	7.0	5.5	2.35	2.56
P526-1025	159 000 485	2.50 in.	7.0	5.5	2.44	2.91
P526-1030	159 000 486	3.00 in.	7.5	6.0	2.97	3.54
P526-1040	159 000 487	4.00 in.	8.0	7.0	3.74	4.55
P526-1050	159 000 488	5.00 in.	10.0	8.0	4.74	5.63
P526-1060	159 000 489	6.00 in.	10.5	9.5	5.94	6.70
P526-1080	159 000 490	8.00 in.	12.75	12.0	7.69	8.72
P526-1100	159 000 491	10.0 in.	14.5	15.0	10.64	12.12
P526-1120	159 000 492	12.0 in.	17.0	17.0	12.62	14.32

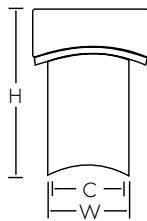
## Metalex Socket Weld Mini-Tap



Part no.	Code	Size	L	H	W	i.d.
P526-2005	198 840 501	0.50 in.	2.0	3.0	2.4	0.850
P526-2007	198 840 502	0.75 in.	2.0	3.0	2.4	1.060
P526-2010	198 840 503	1.00 in.	2.0	3.0	2.4	1.325

•For use with SS pipe

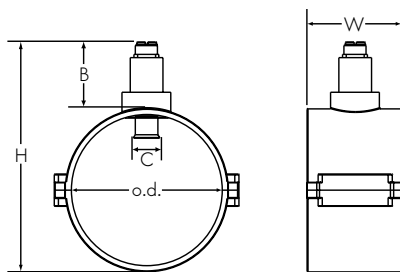
## Metalex Weld-On Mini-Tap



Part no.	Code	Size	H	W	C
P526-2012	159 000 494	1.25 in.	2.25	1.66	1.062
P526-2015	198 840 506	1.50 in.	2.20	1.66	1.062
P526-2020	159 000 495	2.00 in.	2.17	1.66	1.062
P526-2025	159 000 496	2.50 in.	2.10	1.66	1.062
P526-2030	159 000 497	3.00 in.	2.0	1.66	1.062
P526-2040	159 000 498	4.00 in.	1.95	1.66	1.062
P526-2050	159 000 499	5.00 in.	1.83	1.66	1.062
P526-2060	159 000 500	6.00 in.	1.75	1.66	1.062
P526-2080	159 000 501	8.00 in.	1.56	1.66	1.062
P526-2100	159 000 502	10.0 in.	1.35	1.66	1.062
P526-2120	159 000 503	12.0 in.	1.15	1.66	1.062

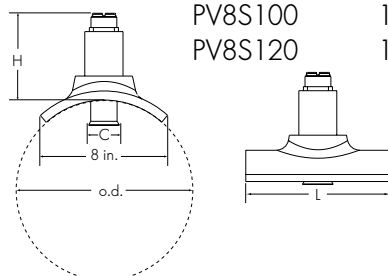
•For use with SS pipe

## PP Clamp-On Saddle Fittings



Part no.	Code	Size	H	W	C	o.d.
PPS100	159 000 693	10 in.	16.75	7.04	2.25	10.75
PPS120	159 000 694	12 in.	18.18	9.68	2.25	12.75

## PVC Glue-On Saddle Fittings



Part no.	Code	Size	H	W	C	o.d.
PV8S100	159 000 695	10 in.	5.43	9.0	2.25	10.75
PV8S120	159 000 696	12 in.	5.15	9.0	2.25	12.75

# +GF+ SIGNET Fitting Insert Reference

Fitting Accessories	Insert part no.	Code	Description
	P31515-0V200	159 000 459	Pipe Adapter Insert, PVDF
	P31515-0C200	159 000 631	Pipe Adapter Insert, CPVC
	P31515-0P200	159 000 630	Pipe Adapter Insert, PVC
	P31520-1V	159 000 460	Pipe Adapter Insert
	P31520-2P	159 000 461	Pipe Adapter Insert
	P31536	198 840 201	Sensor Plug, Polypro
	P31536-2	159 000 649	Sensor Plug, PVDF
	P31671-1	159 000 465	Insert, PVDF 1.5 in.

Brazolet Fittings	Fitting insert no.	Description	Insert Part No.
	BR4B025	Brazolet, Brass	P31515-0V200
	BR4B030	Brazolet, Brass	P31515-0V200
	BR4B040	Brazolet, Brass	P31515-0V200
	BR4B050	Brazolet, Brass	P31520-1V
	BR4B060	Brazolet, Brass	P31520-1V
	BR4B080	Brazolet, Brass	P31520-1V
	BR4B100	Brazolet, Brass	P31520-2P
	BR4B120	Brazolet, Brass	P31520-2P
<b>Tee Fittings</b>			
	BR4T010	Tee, Brass	P31515-0V200
	BR4T012	Tee, Brass	P31515-0V200
	BR4T015	Tee, Brass	P31515-0V200
	BR4T020	Tee, Brass	P31515-0V200
	CUKT005	Tee, Copper	Not applicable
	CUKT007	Tee, Copper	Not applicable
	CUKT010	Tee, Copper	Not applicable
	CUKT012	Tee, Copper	P31515-0V200
	CUKT015	Tee, Copper	P31671-1
	CUKT020	Tee, Copper	P31520-1V
	CR4T005	Tee, SS	P31515-0V200
	CR4T007	Tee, SS	P31515-0V200
	CR4T010	Tee, SS	P31515-0V200
	CR4T012	Tee, SS	P31515-0V200
	CR4T015	Tee, SS	P31671-1
	CR4T020	Tee, SS	P31520-1V
	CS4T005	Tee, Carbon Steel	P31515-0V200
	CS4T007	Tee, Carbon Steel	P31515-0V200
	CS4T010	Tee, Carbon Steel	P31515-0V200
	CS4T012	Tee, Carbon Steel	P31515-0V200
	CS4T015	Tee, Carbon Steel	P31515-0V200
	CS4T020	Tee, Carbon Steel	P31515-0V200

## WARNING!



**FOR YOUR SAFETY:** Always confirm the chemical compatibility and the maximum pressure/temperature specifications for fitting and sensor selection prior to purchase. Failure to do so may result in property damage and/or serious personal injury.

# +GF+ SIGNET Fitting Insert Reference

	<b>Fitting insert no.</b>	<b>Description</b>	<b>Insert Part No.</b>
<b>Tee Fittings</b>	FPT015	Tee, Fiberglass	P31515-0V200
	FPT020	Tee, Fiberglass	P31515-0V200
	IR4T010	Tee, Iron	P31515-0V200
	IR4T012	Tee, Iron	P31515-0V200
	IR4T015	Tee, Iron	P31515-0V200
	IR4T020	Tee, Iron	P31515-0V200
<b>Weldolet Fittings</b>	CR4W025	Weldolet, SS	P31515-0V200
	CR4W030	Weldolet, SS	P31515-0V200
	CR4W040	Weldolet, SS	P31515-0V200
	CR4W050	Weldolet, SS	P31520-1V
	CR4W060	Weldolet, SS	P31520-1V
	CR4W080	Weldolet, SS	P31520-1V
	CR4W100	Weldolet, SS	P31520-2P
	CR4W120	Weldolet, SS	P31520-2P
	CS4W025	Weldolet, Carbon Steel	P31515-0V200
	CS4W030	Weldolet, Carbon Steel	P31515-0V200
	CS4W040	Weldolet, Carbon Steel	P31515-0V200
	CS4W050	Weldolet, Carbon Steel	P31520-1V
	CS4W060	Weldolet, Carbon Steel	P31520-1V
	CS4W080	Weldolet, Carbon Steel	P31520-1V
	CS4W100	Weldolet, Carbon Steel	P31520-2P
CS4W120	Weldolet, Carbon Steel	P31520-2P	
<b>Saddle Fittings</b>	FPS030	Saddle, Fiberglass	P31515-0V200
	FPS040	Saddle, Fiberglass	P31520-1V
	FPS060	Saddle, Fiberglass	P31520-1V
	FPS080	Saddle, Fiberglass	P31520-1V
	FPS100	Saddle, Fiberglass	P31520-2P
	FPS120	Saddle, Fiberglass	P31520-2P
	IR8S020	Saddle, Iron	P31515-0V200
	IR8S025	Saddle, Iron	P31515-0V200
	IR8S030	Saddle, Iron	P31515-0V200
	IR8S040	Saddle, Iron	P31515-0V200
	IR8S050	Saddle, Iron	P31520-1V
	IR8S060	Saddle, Iron	P31520-1V
	IR8S080	Saddle, Iron	P31520-1V
	IR8S100	Saddle, Iron	P31520-2P
	IR8S120	Saddle, Iron	P31520-2P

## +GF+ SIGNET Fitting Insert Reference

---

	<b>Fitting insert no.</b>	<b>Description</b>	<b>Insert Part No.</b>
<b>Saddle Fittings</b>	PPS100	10" Clamp-on Fitting, PP	P31520-2P
	PPS120	12" Clamp-on Fitting, PP	P31520-2P
	PV8S020	Saddle, PVC	Not applicable
	PV8S025	Saddle, PVC	Not applicable
	PV8S030	Saddle, PVC	Not applicable
	PV8S040	Saddle, PVC	Not applicable
	PV8S060	Saddle, PVC	Not applicable
	PV8S080	Saddle, PVC	Not applicable
	PV8S100	10" Glue-on Saddle, PVC	Not applicable
	PV8S120	12" Glue-on Saddle, PVC	Not applicable